



# p47-phox (phospho Ser370) Polyclonal Antibody

<b>Catalog No</b>	YP-Ab-02426
<b>Isotype</b>	IgG
<b>Reactivity</b>	Human;Mouse;Rat
<b>Applications</b>	WB;IHC;IF;ELISA
<b>Gene Name</b>	NCF1
<b>Protein Name</b>	Neutrophil cytosol factor 1
<b>Immunogen</b>	The antiserum was produced against synthesized peptide derived from human p47 phox around the phosphorylation site of Ser370. AA range:341-390
<b>Specificity</b>	Phospho-p47-phox (S370) Polyclonal Antibody detects endogenous levels of p47-phox protein only when phosphorylated at S370.
<b>Formulation</b>	Liquid in PBS containing 50% glycerol, 0.5% BSA and 0.02% sodium azide.
<b>Source</b>	Polyclonal, Rabbit,IgG
<b>Purification</b>	The antibody was affinity-purified from rabbit antiserum by affinity-chromatography using epitope-specific immunogen.
<b>Dilution</b>	WB: 1/500 - 1/2000. IHC: 1/100 - 1/300. ELISA: 1/5000.. IF 1:50-200
<b>Concentration</b>	1 mg/ml
<b>Purity</b>	≥90%
<b>Storage Stability</b>	-20°C/1 year
<b>Synonyms</b>	NCF1; NOXO2; SH3PXD1A; Neutrophil cytosol factor 1; NCF-1; 47 kDa autosomal chronic granulomatous disease protein; 47 kDa neutrophil oxidase factor; NCF-47K; Neutrophil NADPH oxidase factor 1; Nox organizer 2; Nox-organizing protein 2; SH3
<b>Observed Band</b>	
<b>Cell Pathway</b>	Cytoplasm, cytosol . Membrane ; Peripheral membrane protein ; Cytoplasmic side
<b>Tissue Specificity</b>	Detected in peripheral blood monocytes and neutrophils (at protein level).
<b>Function</b>	disease:Defects in NCF1 are the cause of chronic granulomatous disease autosomal recessive cytochrome-b-positive type 1 (CGD1) [MIM:233700]. Chronic granulomatous disease is a genetically heterogeneous disorder characterized by the inability of neutrophils and phagocytes to kill microbes that they have ingested. Patients suffer from life-threatening bacterial/fungal infections.,function:NCF2, NCF1, and a membrane bound cytochrome b558 are required for activation of the latent NADPH oxidase (necessary for superoxide production).,online information:NCF1 deficiency database,similarity:Contains 1 PX (phox homology) domain.,similarity:Contains 2 SH3 domains.,subunit:Interacts with NOXA1.,



## Background

The protein encoded by this gene is a 47 kDa cytosolic subunit of neutrophil NADPH oxidase. This oxidase is a multicomponent enzyme that is activated to produce superoxide anion. Mutations in this gene have been associated with chronic granulomatous disease. [provided by RefSeq, Jul 2008],

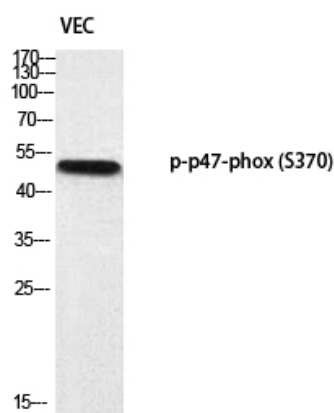
## matters needing attention

Avoid repeated freezing and thawing!

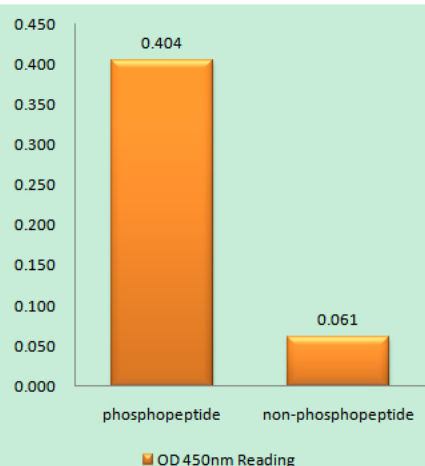
## Usage suggestions

This product can be used in immunological reaction related experiments. For more information, please consult technical personnel.

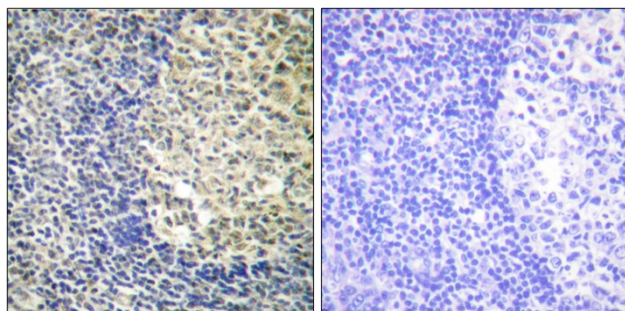
## Products Images



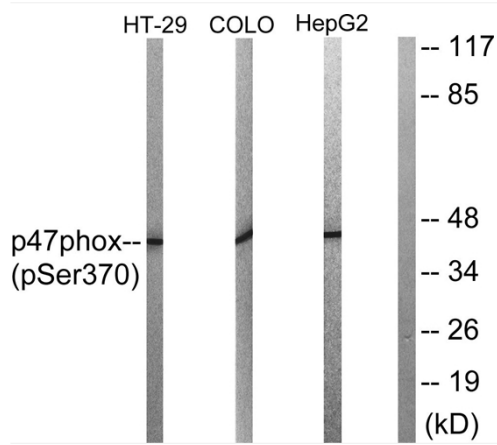
Western blot analysis of VEC using p-p47-phox (S370) antibody.



Enzyme-Linked Immunosorbent Assay (Phospho-ELISA) for Immunogen Phosphopeptide (Phospho-left) and Non-Phosphopeptide (Phospho-right), using p47 phox (Phospho-Ser370) Antibody



Immunohistochemistry analysis of paraffin-embedded human tonsil, using p47 phox (Phospho-Ser370) Antibody. The picture on the right is blocked with the phospho peptide.



Western blot analysis of p47 phox (Phospho-Ser370) Antibody. The lane on the right is blocked with the p47 phox (Phospho-Ser370) peptide.